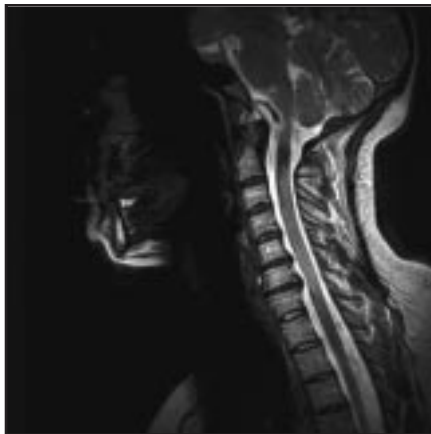


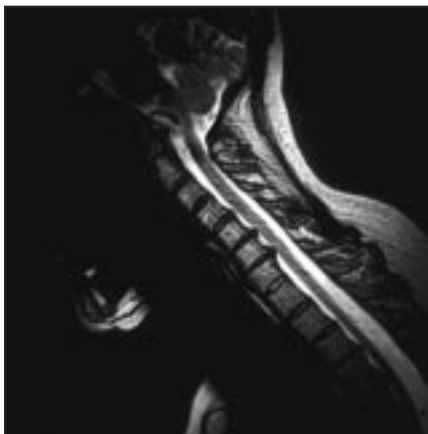
POSITIONAL GENERATION OF CLINICAL SYMPTOMS

The recumbent image (15A) shows posterior disc protrusions at C5/6 and C6/7. Also note the adequate CSF space anterior to the spinal cord. The upright-flexion image (15B) shows draping of the spinal cord over the posteriorly protruding discs. Clinically this patient exhibited L'Hermitte's sign in the upright-flexion position.

Case courtesy of Melville MRI, P.C.



15A - Recumbent



15B - Upright Flexion

UNOPERATED HYPERMOBILE INTERSEGMENTAL SPINAL INSTABILITY

The recumbent image (17A) shows degenerative disc disease from L3 to S1, and minor narrowing of the central spinal canal (stenosis) at L3/4. The upright image (17B) reveals degenerative intersegmental hypermobile instability (anterolisthesis: arrow) at the L3/4 level. This level also shows further central spinal canal stenosis in the upright position.

Case courtesy of Stand-Up MRI of Carle Place, P.C.



17A - Recumbent



17B - Upright